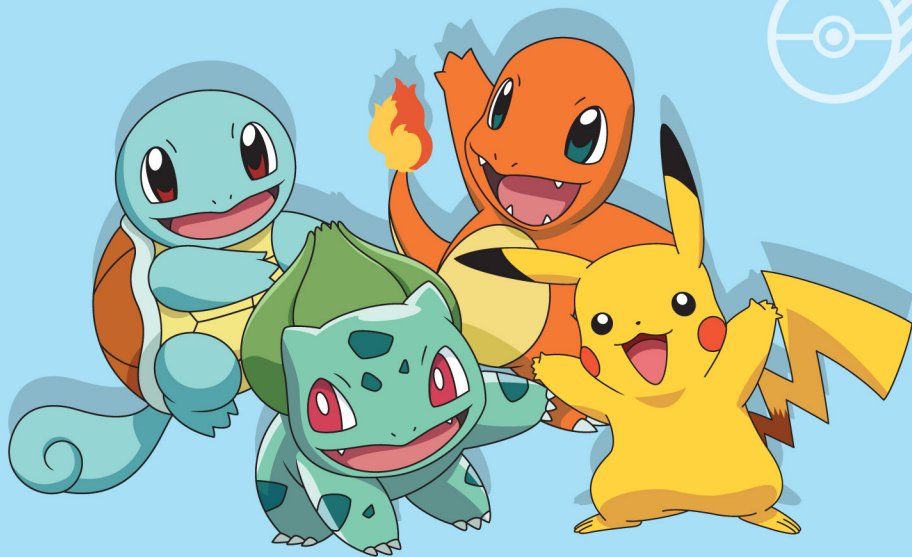


# POKÉMON™



## TRAINER GUESS

Kanto Edition

zan zoon

# POKÉMON™

## Trainer Field Guide



## TRAINER GUESS

Kanto Edition

## Think of a Pokémon, I'll Guess It!

**Hello trainer! Are you ready for your Pokémon journey?**

**TRAINER GUESS** is an amazing guessing game that lets you collect Pokémon. Think of a Pokémon, and it will try to guess it by asking you questions. If **TRAINER GUESS**, guesses it right, the Pokémon will be added to your electronic collection!

**NOTE:** Once **TRAINER GUESS** is removed from package, pull the "Try Me" tag to start your collection.

### HOW TO PLAY WITH TRAINER GUESS:

Press the Poké Ball's button to turn it on. The Poké Ball will talk to you and ask you to think of a Pokémon.

Say "OK" in a clear voice when you've thought of Pokémon and are ready to play.

**TRAINER GUESS** will ask you several questions in order to guess the Pokémon you've chosen. You can answer with:

- "YES"
- "NO"
- "I DON'T KNOW"
- "IT DEPENDS"

If you did not hear the question, you can ask the Poké Ball to repeat it by saying: "**SAY IT AGAIN**".

If you want to change your previous answer, you can ask the Poké Ball to go back by saying: "**GO BACK**", when the Poké Ball is silent.

The Poké Ball will then go back and ask you the previous question again. You can go back as far as the first question asked.

If you don't want to play anymore, press the Poké Ball's button to switch it off.

If the toy is left inactive for 60 seconds it will switch itself off.

### TRAINER FIELD GUIDE:

Your field guide will help you a lot during your journey. Use it to discover new Pokémon and learn more about them. In case you're not sure of an answer, check it in your field guide! Answering the Poké Ball's questions correctly will increase its chances of finding your Pokémon. And when a Pokémon is added to your electronic collection, don't forget to also check it off in your field guide.

### CHECKING YOUR COLLECTION:

You can check your collection anytime during the game simply holding down the button for 2 seconds. The Poké Ball will then stop the guessing game and tell you how many Pokémon you have, how many are left, and it will even give you the list of all the Pokémon you've collected.

### RESET YOUR COLLECTION:

You can start a brand new collection at anytime by resetting the game. With adult supervision, use a screwdriver to open the Poké Ball battery compartment. Then, press and hold the Poké Ball's button. Keep holding it down while you close the battery compartment again and wait to hear "We Now Have 0 Pokémon." before releasing the button. Your collection has now been reset.



### Wartortle

**TYPE** WATER  
**HEIGHT** 3'03" (1.0 m)  
**WEIGHT** 49.6 lbs (22.5 kg)  
**EVOLUTION**  
 SQUIRTLE > WARTORTLE > BLASTOISE



### Weedle

**TYPE** BUG - POISON  
**HEIGHT** 1'00" (0.3 m)  
**WEIGHT** 7.1 lbs (3.2 kg)  
**EVOLUTION**  
 WEEDLE > KAKUNA > BEEDRILL



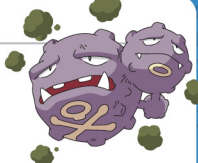
### Weepinbell

**TYPE** GRASS - POISON  
**HEIGHT** 3'03" (1.0 m)  
**WEIGHT** 14.1 lbs (6.4 kg)  
**EVOLUTION**  
 BELLSPROUT > WEEPINBELL > VICTREEBEL



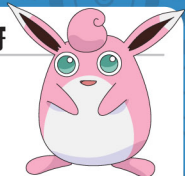
### Weezing

**TYPE** POISON  
**HEIGHT** 3'11" (1.2 m)  
**WEIGHT** 20.9 lbs (9.5 kg)  
**EVOLUTION**  
 KOFFING > WEEZING



### Wigglytuff

**TYPE** NORMAL - FAIRY  
**HEIGHT** 3'03" (1.0 m)  
**WEIGHT** 26.5 lbs (12.0 kg)  
**EVOLUTION**  
 JIGGLYPUFF > WIGGLYTUFF



### Zapdos

**TYPE** ELECTRIC - FLYING  
**HEIGHT** 5'03" (1.6 m)  
**WEIGHT** 116.0 lbs (52.6 kg)  
**EVOLUTION**  
 DOES NOT EVOLVE



### Zubat

**TYPE** POISON - FLYING  
**HEIGHT** 2'07" (0.8 m)  
**WEIGHT** 16.5 lbs (7.5 kg)  
**EVOLUTION**  
 ZUBAT > GOLBAT



### BATTERY INSTRUCTIONS

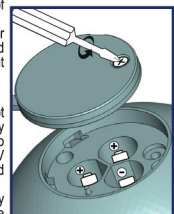
Keep these instructions handy for future reference. Please follow the guidelines below to avoid damaging the pad:  
 • Store the toy in a dry place, keep out of direct sunlight and away from heat source.  
 • Do not dismantle the toy in any way.  
 • Keep the toy clean by wiping it with a slightly damp cloth.  
 • Remove the batteries when the toy will not be in use for an extended period of time.

### BATTERY INFORMATION

- Non-rechargeable batteries are not to be recharged.
- Batteries should always be replaced under adult supervision.
- Rechargeable batteries are only to be charged under adult supervision.
- Rechargeable batteries are to be removed from the toy before being charged.
- The supply terminals are not to be short-circuited.
- Different types of batteries or new and used batteries are not to be mixed.
- Batteries are to be inserted with the correct polarity.
- Exhausted batteries are to be removed from the toy.
- Dispose of batteries safely.
- Do not dispose of batteries in fire. Batteries may explode or leak.
- Remove the batteries during long periods of non-use.
- Do not throw used batteries into fire or nature, or dispose of them as household waste. Take them to a local collection point or recycling facility.

### BATTERY INSTALLATION

Using a Phillips/crosshead screwdriver (not included), loosen the screws in the battery compartment cover (screws stay attached to cover). Remove the cover, insert 3 x 1.5V "AAA" size batteries. Replace cover and tighten screws.  
 The batteries provided with this toy are only sufficient to enable testing in store. They are not long-life batteries. To ensure optimal performance we recommend the exclusive use of alkaline batteries. Rechargeable batteries are not recommended as they do not provide adequate power. Only batteries specified for this product should be used.  
 If voices become slow or distorted: replace the batteries.



This device is stamped with a «selective sorting» symbol relating to the disposal of electric and electronic equipment. This means the product must be dealt with by a system of selective collection in accordance with European directive 2002/96/CE, so it can be recycled and reduce the impact on the environment. For more details, please contact your local administration.  
 Electronic products which are not subject to special collection are potentially dangerous for the environment and public health, as they contain dangerous substances.

Lead (Pb) is more than 0,004%. Please remove exhausted batteries from the product and use designated collection points or recycling facilities when disposing of batteries.



Warning! Not suitable for children under 36 months. Small parts. Choking hazard.

©2017 The Pokémon Company International.  
 ©1995-2017 Nintendo/Creatures Inc./GAME FREAK inc.  
 TM, ®, and character names are trademarks of Nintendo.  
 Trainer Guess : Karlo Edition ©2017 Zanzoon. All rights reserved.  
 ZANZOOON 90 rue de Villiers - 92300 Levallois-Perret - France  
 zanzoon@zanzoon.net - www.zanzoon.net

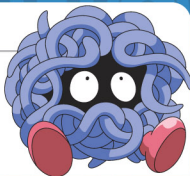
## Tangela

TYPE GRASS

HEIGHT 3'03" (1.0 m)

WEIGHT 77.2 lbs (35.0 kg)

EVOLUTION  
DOES NOT EVOLVE



## Venonat

TYPE BUG - POISON

HEIGHT 3'03" (1.0 m)

WEIGHT 66.1 lbs (30.0 kg)

EVOLUTION  
VENONAT > VENOMOTH



## Tauros

TYPE NORMAL

HEIGHT 4'07" (1.4 m)

WEIGHT 194.9 lbs (88.4 kg)

EVOLUTION  
DOES NOT EVOLVE



## Venusaur

TYPE GRASS - POISON

HEIGHT 6'07" (2.0 m)

WEIGHT 220.5 lbs (100.0 kg)

EVOLUTION  
BULBASAUER > IVYSAUR > VENUSAUR



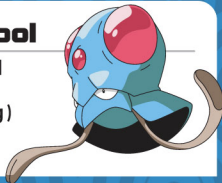
## Tentacool

TYPE WATER - POISON

HEIGHT 2'11" (0.9 m)

WEIGHT 100.3 lbs (45.5 kg)

EVOLUTION  
TENTACOOL > TENTACRUEL



## Victreebel

TYPE GRASS - POISON

HEIGHT 5'07" (1.7 m)

WEIGHT 34.2 lbs (15.5 kg)

EVOLUTION  
BELLSPROUT > WEEPINBELL > VICTREEBEL



## Tentacruel

TYPE WATER - POISON

HEIGHT 5'03" (1.6 m)

WEIGHT 121.3 lbs (55.0 kg)

EVOLUTION  
TENTACOOL > TENTACRUEL



## Vileplume

TYPE GRASS - POISON

HEIGHT 3'11" (1.2 m)

WEIGHT 41.0 lbs (18.6 kg)

EVOLUTION  
ODDISH > GLOOM > VILEPLUME



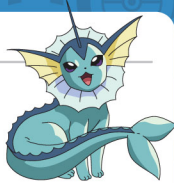
## Vaporeon

TYPE WATER

HEIGHT 3'03" (1.0 m)

WEIGHT 63.9 lbs (29.0 kg)

EVOLUTION  
EEVEE > VAPOREON OR JOLTEON  
OR FLAREON



## Voltorb

TYPE ELECTRIC

HEIGHT 3'10" (0.5 m)

WEIGHT 22.9 lbs (10.4 kg)

EVOLUTION  
VOLTORB > ELECTRODE



## Venomoth

TYPE BUG - POISON

HEIGHT 4'11" (1.5 m)

WEIGHT 27.6 lbs (12.5 kg)

EVOLUTION  
VENONAT > VENOMOTH



## Abra

TYPE PSYCHIC

HEIGHT 2'11" (0.9 m)

WEIGHT 43.0 lbs (19.5 kg)

EVOLUTION  
ABRA > KADABRA > ALAKAZAM



## Aerodactyl

TYPE ROCK - FLYING

HEIGHT 5'11" (1.8 m)

WEIGHT 130.1 lbs (59 kg)

EVOLUTION  
DOES NOT EVOLVE



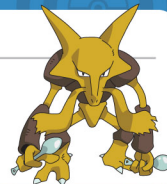
## Alakazam

TYPE PSYCHIC

HEIGHT 4'11" (1.5 m)

WEIGHT 105.8 lbs (48.0 kg)

EVOLUTION  
ABRA > KADABRA > ALAKAZAM



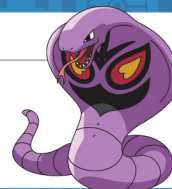
## Arbok

TYPE POISON

HEIGHT 11'06" (3.5 m)

WEIGHT 143.3 lbs (65.0 kg)

EVOLUTION  
EKANS > ARBOK



## Arcanine

TYPE FIRE

HEIGHT 6'03" (1.9 m)

WEIGHT 341.7 lbs (155.0 kg)

EVOLUTION  
GROWLITHE > ARCANINE



## Articuno

TYPE ICE - FLYING

HEIGHT 5'07" (1.7 m)

WEIGHT 122.1 lbs (55.4 kg)

EVOLUTION  
DOES NOT EVOLVE



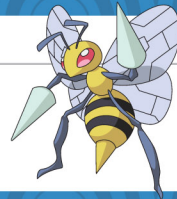
## Beedrill

TYPE BUG - POISON

HEIGHT 3'03" (1.0 m)

WEIGHT 65 lbs (29.5 kg)

EVOLUTION  
WEEDEE > KAKUNA > BEEDRILL



## Bellsprout

TYPE GRASS - POISON

HEIGHT 2'04" (0.7 m)

WEIGHT 8.8 lbs (4.0 kg)

EVOLUTION  
BELLSPROUT > WEEPINBELL > VICTREEBEL



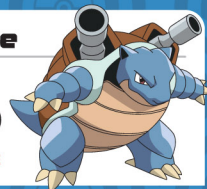
## Blastoise

TYPE WATER

HEIGHT 5'03" (1.6 m)

WEIGHT 188.5 lbs (85.5 kg)

EVOLUTION  
SQUIRTLE > WARTORTLE > BLASTOISE



## Bulbasaur

TYPE GRASS - POISON

HEIGHT 2'04" (0.7 m)

WEIGHT 15.2 lbs (6.9 kg)

EVOLUTION  
BULBASAUER > IVYSAUR > VENUSAUR



## Butterfree

TYPE BUG - FLYING

HEIGHT 3'07" (1.1 m)

WEIGHT 70.5 lbs (32.0 kg)

EVOLUTION  
CATERPIE > METAPOD > BUTTERFREE



## Caterpie

TYPE BUG

HEIGHT 1'00" (0.3 m)

WEIGHT 6.4 lbs (2.9 kg)

EVOLUTION  
CATERPIE > METAPOD > BUTTERFREE



**Chansey**

**TYPE** NORMAL  
**HEIGHT** 3'07" (1.1 m)  
**WEIGHT** 76.3 lbs (34.6 kg)  
**EVOLUTION**  
DOES NOT EVOLVE



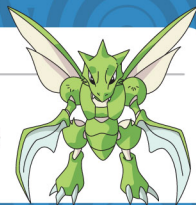
**Cloyster**

**TYPE** WATER - ICE  
**HEIGHT** 4'11" (1.5 m)  
**WEIGHT** 292.1 lbs (132.5 kg)  
**EVOLUTION**  
SHELLDER > CLOYSTER



**Scyther**

**TYPE** BUG - FLYING  
**HEIGHT** 4'11" (1.5 m)  
**WEIGHT** 123.5 lbs (56.0 kg)  
**EVOLUTION**  
DOES NOT EVOLVE



**Slowpoke**

**TYPE** WATER - PSYCHIC  
**HEIGHT** 3'11" (1.2 m)  
**WEIGHT** 79.4 lbs (36.0 kg)  
**EVOLUTION**  
SLOWPOKE > SLOWBRO



**Charizard**

**TYPE** FIRE - FLYING  
**HEIGHT** 5'07" (1.7 m)  
**WEIGHT** 199.5 lbs (90.5 kg)  
**EVOLUTION**  
CHARMANDER > CHARMLEON > CHARIZARD



**Cubone**

**TYPE** GROUND  
**HEIGHT** 1'04" (0.4 m)  
**WEIGHT** 14.3 lbs (6.5 kg)  
**EVOLUTION**  
CUBONE > MAROWAK



**Seadra**

**TYPE** WATER  
**HEIGHT** 3'11" (1.2 m)  
**WEIGHT** 55.1 lbs (25.0 kg)  
**EVOLUTION**  
HORSEA > SEADRA



**Snorlax**

**TYPE** NORMAL  
**HEIGHT** 6'11" (2.1 m)  
**WEIGHT** 1014.1 lbs (460.0 kg)  
**EVOLUTION**  
DOES NOT EVOLVE



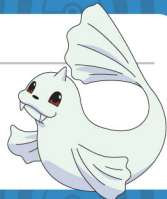
**Charmander**

**TYPE** FIRE  
**HEIGHT** 2'00" (0.6 m)  
**WEIGHT** 18.7 lbs (8.5 kg)  
**EVOLUTION**  
CHARMANDER > CHARMLEON > CHARIZARD



**Dewgong**

**TYPE** WATER - ICE  
**HEIGHT** 5'07" (1.7 m)  
**WEIGHT** 264.6 lbs (120 kg)  
**EVOLUTION**  
SEEL > DEWGONG



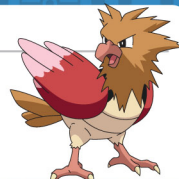
**Seaking**

**TYPE** WATER  
**HEIGHT** 4'03" (1.3 m)  
**WEIGHT** 86.0 lbs (39.0 kg)  
**EVOLUTION**  
GOLDEEN > SEAKING



**Spearow**

**TYPE** NORMAL - FLYING  
**HEIGHT** 1'00" (0.3 m)  
**WEIGHT** 4.4 lbs (2.0 kg)  
**EVOLUTION**  
SPEAROW > FEAROW



**Charmeleon**

**TYPE** FIRE  
**HEIGHT** 3'07" (1.1 m)  
**WEIGHT** 41.9 lbs (19.0 kg)  
**EVOLUTION**  
CHARMANDER > CHARMLEON > CHARIZARD



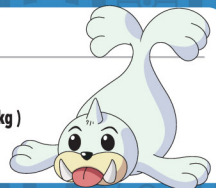
**Diglett**

**TYPE** GROUND  
**HEIGHT** 0'8" (0.3 m)  
**WEIGHT** 1.8 lbs (0.8 kg)  
**EVOLUTION**  
DIGLETT > DUGTRIO



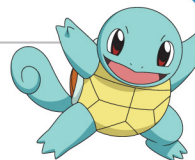
**Seel**

**TYPE** WATER  
**HEIGHT** 3'07" (1.1 m)  
**WEIGHT** 198.4 lbs (90.0 kg)  
**EVOLUTION**  
SEEL > DEWGONG



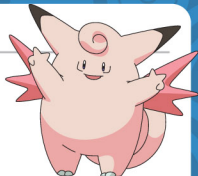
**Squirtle**

**TYPE** WATER  
**HEIGHT** 1'08" (0.5 m)  
**WEIGHT** 19.8 lbs (9.0 kg)  
**EVOLUTION**  
SQUIRTLE > WARTORTLE > BLASTOISE



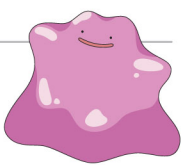
**Clefable**

**TYPE** FAIRY  
**HEIGHT** 4'03" (1.3 m)  
**WEIGHT** 88.2 lbs (40.0 kg)  
**EVOLUTION**  
CLEFAIRY > CLEFABLE



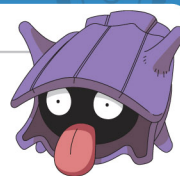
**Ditto**

**TYPE** NORMAL  
**HEIGHT** 1'0" (0.3 m)  
**WEIGHT** 8.8 lbs (4.0 kg)  
**EVOLUTION**  
DOES NOT EVOLVE



**Shellder**

**TYPE** WATER  
**HEIGHT** 1'00" (0.3 m)  
**WEIGHT** 8.8 lbs (4.0 kg)  
**EVOLUTION**  
SHELLDER > CLOYSTER



**Starmie**

**TYPE** WATER - PSYCHIC  
**HEIGHT** 3'07" (1.1 m)  
**WEIGHT** 176.4 lbs (80.0 kg)  
**EVOLUTION**  
STARYU > STARMIE



**Clefairy**

**TYPE** FAIRY  
**HEIGHT** 2'00" (0.6 m)  
**WEIGHT** 16.5 lbs (7.5 kg)  
**EVOLUTION**  
CLEFAIRY > CLEFABLE



**Dodrio**

**TYPE** NORMAL - FLYING  
**HEIGHT** 5'11" (1.8 m)  
**WEIGHT** 187.8 lbs (85.2 kg)  
**EVOLUTION**  
DODUO > DODRIO



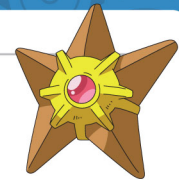
**Slowbro**

**TYPE** WATER - PSYCHIC  
**HEIGHT** 5'03" (1.6 m)  
**WEIGHT** 173.1 lbs (78.5 kg)  
**EVOLUTION**  
SLOWPOKE > SLOWBRO



**Staryu**

**TYPE** WATER  
**HEIGHT** 2'07" (0.8 m)  
**WEIGHT** 76.1 lbs (34.5 kg)  
**EVOLUTION**  
STARYU > STARMIE



FIRST PARTNER

FIRST PARTNER

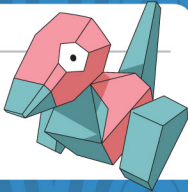
**Ponyta**

**TYPE** FIRE  
**HEIGHT** 3'03" (1.0 m)  
**WEIGHT** 66.1 lbs (30.0 kg)  
**EVOLUTION**  
PONYTA > RAPIDASH



**Porygon**

**TYPE** NORMAL  
**HEIGHT** 2'07" (0.8 m)  
**WEIGHT** 80.5 lbs (36.5 kg)  
**EVOLUTION**  
DOES NOT EVOLVE



**Primeape**

**TYPE** FIGHTING  
**HEIGHT** 3'03" (1.0 m)  
**WEIGHT** 70.5 lbs (32.0 kg)  
**EVOLUTION**  
MANKEY > PRIMEAPE



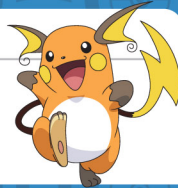
**Psyduck**

**TYPE** WATER  
**HEIGHT** 2'07" (0.8 m)  
**WEIGHT** 43.2 lbs (19.6 kg)  
**EVOLUTION**  
PSYDUCK > GOLDDUCK



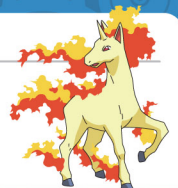
**Raichu**

**TYPE** ELECTRIC  
**HEIGHT** 2'07" (0.8 m)  
**WEIGHT** 66.1 lbs (30.0 kg)  
**EVOLUTION**  
PIKACHU > RAICHU



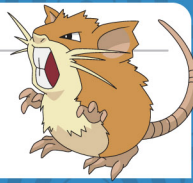
**Rapidash**

**TYPE** FIRE  
**HEIGHT** 5'07" (1.7 m)  
**WEIGHT** 209.4 lbs (95.0 kg)  
**EVOLUTION**  
PONYTA > RAPIDASH



**Raticate**

**TYPE** NORMAL  
**HEIGHT** 2'04" (0.7 m)  
**WEIGHT** 40.8 lbs (18.5 kg)  
**EVOLUTION**  
RATTATA > RATICATE



**Rattata**

**TYPE** NORMAL  
**HEIGHT** 1'00" (0.3 m)  
**WEIGHT** 7.7 lbs (3.5 kg)  
**EVOLUTION**  
RATTATA > RATICATE



**Rhydon**

**TYPE** GROUND - ROCK  
**HEIGHT** 6'03" (1.9 m)  
**WEIGHT** 264.6 lbs (120.0 kg)  
**EVOLUTION**  
RHYHORN > RHYDON



**Rhyhorn**

**TYPE** GROUND - ROCK  
**HEIGHT** 3'03" (1.0 m)  
**WEIGHT** 253.5 lbs (115.0 kg)  
**EVOLUTION**  
RHYHORN > RHYDON



**Sandshrew**

**TYPE** GROUND  
**HEIGHT** 2'00" (0.6 m)  
**WEIGHT** 26.5 lbs (12.0 kg)  
**EVOLUTION**  
SANDSHREW > SANDSLASH



**Sandslash**

**TYPE** GROUND  
**HEIGHT** 3'03" (1.0 m)  
**WEIGHT** 65.0 lbs (29.5 kg)  
**EVOLUTION**  
SANDSHREW > SANDSLASH



**Doduo**

**TYPE** NORMAL - FLYING  
**HEIGHT** 4'07" (1.4 m)  
**WEIGHT** 86.4 lbs (39.2 kg)  
**EVOLUTION**  
DODUO > DODRIO



**Dragonair**

**TYPE** DRAGON  
**HEIGHT** 13'11" (4.0 m)  
**WEIGHT** 36.4 lbs (16.5 kg)  
**EVOLUTION**  
DRATINI > DRAGONAIR > DRAGONITE



**Dragonite**

**TYPE** DRAGON - FLYING  
**HEIGHT** 7'03" (2.2 m)  
**WEIGHT** 463.0 lbs (210.0 kg)  
**EVOLUTION**  
DRATINI > DRAGONAIR > DRAGONITE



**Dratini**

**TYPE** DRAGON  
**HEIGHT** 5'11" (1.8 m)  
**WEIGHT** 7.3 lbs (3.3 kg)  
**EVOLUTION**  
DRATINI > DRAGONAIR > DRAGONITE



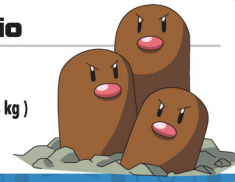
**Drowzee**

**TYPE** PSYCHIC  
**HEIGHT** 3'03" (1.3 m)  
**WEIGHT** 71.4 lbs (32.4 kg)  
**EVOLUTION**  
DROWZEE > HYPNO



**Dugtrio**

**TYPE** GROUND  
**HEIGHT** 2'04" (0.7 m)  
**WEIGHT** 73.4 lbs (33.3 kg)  
**EVOLUTION**  
DIGLETT > DUGTRIO



**Eevee**

**TYPE** NORMAL  
**HEIGHT** 1'00" (0.3 m)  
**WEIGHT** 14.3 lbs (6.5 kg)  
**EVOLUTION**  
EEVEE > Vaporeon OR Jolteon OR Flareon



**Ekans**

**TYPE** POISON  
**HEIGHT** 6'07" (2.0 m)  
**WEIGHT** 15.2 lbs (6.9 kg)  
**EVOLUTION**  
EKANS > ARBOK



**Electabuzz**

**TYPE** ELECTRIC  
**HEIGHT** 3'07" (1.1 m)  
**WEIGHT** 66.1 lbs (30.0 kg)  
**EVOLUTION**  
DOES NOT EVOLVE



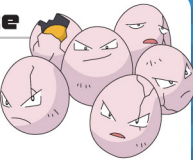
**Electrode**

**TYPE** ELECTRIC  
**HEIGHT** 3'11" (1.2 m)  
**WEIGHT** 146.8 lbs (66.6 kg)  
**EVOLUTION**  
VOLTORB > ELECTRODE



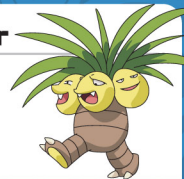
**Exeggcute**

**TYPE** GRASS - PSYCHIC  
**HEIGHT** 3'11" (1.2 m)  
**WEIGHT** 5.5 lbs (2.5 kg)  
**EVOLUTION**  
EXEGGCUTE > EXEGGUTOR



**Exeggutor**

**TYPE** GRASS - PSYCHIC  
**HEIGHT** 6'07" (2.0 m)  
**WEIGHT** 264.6 lbs (120.0 kg)  
**EVOLUTION**  
EXEGGCUTE > EXEGGUTOR



## Farfetch'd

**TYPE** NORMAL - FLYING  
**HEIGHT** 2'07" (0.8 m)  
**WEIGHT** 33.1 lbs (15.0 kg)  
**EVOLUTION**  
DOES NOT EVOLVE



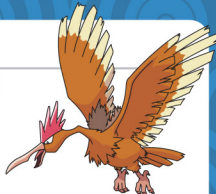
## Gloom

**TYPE** GRASS - POISON  
**HEIGHT** 2'07" (0.8 m)  
**WEIGHT** 19.0 lbs (8.6 kg)  
**EVOLUTION**  
ODDISH > GLOOM > VILEPLUME



## Fearow

**TYPE** NORMAL - FLYING  
**HEIGHT** 3'11" (1.2 m)  
**WEIGHT** 83.8 lbs (38.0 kg)  
**EVOLUTION**  
SPEAROW > FEAROW



## Golbat

**TYPE** POISON - FLYING  
**HEIGHT** 5'03" (1.6 m)  
**WEIGHT** 121.3 lbs (55.0 kg)  
**EVOLUTION**  
ZUBAT > GOLBAT



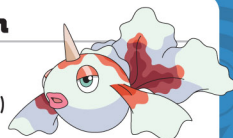
## Flareon

**TYPE** FIRE  
**HEIGHT** 2'11" (0.9 m)  
**WEIGHT** 55.1 lbs (25.0 kg)  
**EVOLUTION**  
EVEE > VAPOREON OR JOLTEON  
OR FLAREON



## Goldeen

**TYPE** WATER  
**HEIGHT** 2'00" (0.6 m)  
**WEIGHT** 33.1 lbs (15.0 kg)  
**EVOLUTION**  
GOLDEEN > SEAKING



## Gastly

**TYPE** GHOST - POISON  
**HEIGHT** 4'03" (1.3 m)  
**WEIGHT** 0.2 lbs (0.1 kg)  
**EVOLUTION**  
GASTLY > HAUNTER > GENGAR



## Golduck

**TYPE** WATER  
**HEIGHT** 5'07" (1.7 m)  
**WEIGHT** 168.9 lbs (76.6 kg)  
**EVOLUTION**  
PSYDUCK > GOLDUCK



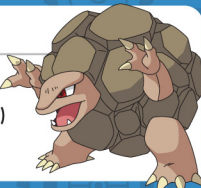
## Gengar

**TYPE** GHOST - POISON  
**HEIGHT** 4'11" (1.5 m)  
**WEIGHT** 89.3 lbs (40.5 kg)  
**EVOLUTION**  
GASTLY > HAUNTER > GENGAR



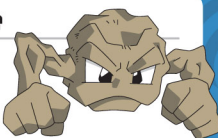
## Golem

**TYPE** ROCK - GROUND  
**HEIGHT** 4'07" (1.4 m)  
**WEIGHT** 661.4 lbs (300.0 kg)  
**EVOLUTION**  
GEODUDE > GRAVELER > GOLEM



## Geodude

**TYPE** ROCK - GROUND  
**HEIGHT** 1'04" (0.4 m)  
**WEIGHT** 44.1 lbs (20.0 kg)  
**EVOLUTION**  
GEODUDE > GRAVELER > GOLEM



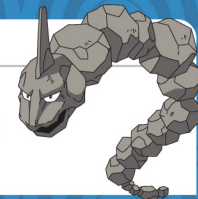
## Graveler

**TYPE** ROCK - GROUND  
**HEIGHT** 3'03" (1.0 m)  
**WEIGHT** 231.5 lbs (105.0 kg)  
**EVOLUTION**  
GEODUDE > GRAVELER > GOLEM



## Onix

**TYPE** ROCK - GROUND  
**HEIGHT** 28'10" (8.8 m)  
**WEIGHT** 463.0 lbs (210.0 kg)  
**EVOLUTION**  
DOES NOT EVOLVE



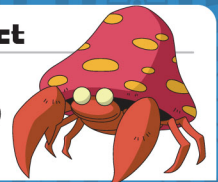
## Paras

**TYPE** BUG - GRASS  
**HEIGHT** 1'00" (0.3 m)  
**WEIGHT** 11.9 lbs (5.4 kg)  
**EVOLUTION**  
PARAS > PARASECT



## Parasect

**TYPE** BUG - GRASS  
**HEIGHT** 3'03" (1.0 m)  
**WEIGHT** 65.0 lbs (29.5 kg)  
**EVOLUTION**  
PARAS > PARASECT



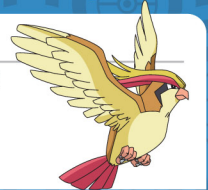
## Persian

**TYPE** NORMAL  
**HEIGHT** 3'03" (1.0 m)  
**WEIGHT** 70.5 lbs (32.0 kg)  
**EVOLUTION**  
MEOWTH > PERSIAN



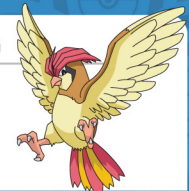
## Pidgeot

**TYPE** NORMAL - FLYING  
**HEIGHT** 4'11" (1.5 m)  
**WEIGHT** 87.1 lbs (39.5 kg)  
**EVOLUTION**  
PIDGEY > PIDGEOTTO > PIDGEOT



## Pidgeotto

**TYPE** NORMAL - FLYING  
**HEIGHT** 3'07" (1.1 m)  
**WEIGHT** 66.1 lbs (30.0 kg)  
**EVOLUTION**  
PIDGEY > PIDGEOTTO > PIDGEOT



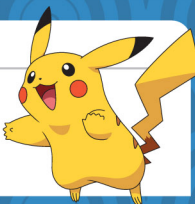
## Pidgey

**TYPE** NORMAL - FLYING  
**HEIGHT** 1'00" (0.3 m)  
**WEIGHT** 4.0 lbs (1.8 kg)  
**EVOLUTION**  
PIDGEY > PIDGEOTTO > PIDGEOT



## Pikachu

**TYPE** ELECTRIC  
**HEIGHT** 1'04" (0.4 m)  
**WEIGHT** 13.2 lbs (6.0 kg)  
**EVOLUTION**  
PIKACHU > RAICHU



## Pinsir

**TYPE** BUG  
**HEIGHT** 4'11" (1.5 m)  
**WEIGHT** 121.3 lbs (55.0 kg)  
**EVOLUTION**  
DOES NOT EVOLVE



## Poliwag

**TYPE** WATER  
**HEIGHT** 2'00" (0.6 m)  
**WEIGHT** 27.3 lbs (12.4 kg)  
**EVOLUTION**  
POLIWAG > POLIWHIRL > POLIWRATH



## Poliwhirl

**TYPE** WATER  
**HEIGHT** 2'00" (0.6 m)  
**WEIGHT** 44.1 lbs (20.0 kg)  
**EVOLUTION**  
POLIWAG > POLIWHIRL > POLIWRATH



## Poliwrath

**TYPE** WATER - FIGHTING  
**HEIGHT** 4'03" (1.3 m)  
**WEIGHT** 119.0 lbs (54.0 kg)  
**EVOLUTION**  
POLIWAG > POLIWHIRL > POLIWRATH



**Mr. Mime**

**TYPE** PSYCHIC - FAIRY  
**HEIGHT** 4'03" (1.3 m)  
**WEIGHT** 120.1 lbs (54.5 kg)  
**EVOLUTION**  
DOES NOT EVOLVE



**Nidorina**

**TYPE** POISON  
**HEIGHT** 2'07" (0.8 m)  
**WEIGHT** 44.1 lbs (20.0 kg)  
**EVOLUTION**  
NIDORAN♀ > NIDORINA > NIDOQUEEN



**Grimer**

**TYPE** POISON  
**HEIGHT** 2'11" (0.9 m)  
**WEIGHT** 66.1 lbs (30.0 kg)  
**EVOLUTION**  
GRIMER > MUK



**Horsea**

**TYPE** WATER  
**HEIGHT** 1'04" (0.4 m)  
**WEIGHT** 17.6 lbs (8.0 kg)  
**EVOLUTION**  
HORSEA > SEADRA



**Muk**

**TYPE** POISON  
**HEIGHT** 3'11" (1.2 m)  
**WEIGHT** 66.1 lbs (30.0 kg)  
**EVOLUTION**  
GRIMER > MUK



**Nidorino**

**TYPE** POISON  
**HEIGHT** 2'11" (0.9 m)  
**WEIGHT** 43.0 lbs (19.5 kg)  
**EVOLUTION**  
NIDORAN♂ > NIDORINO > NIDOKING



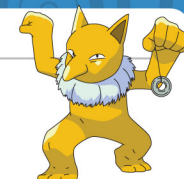
**Growlithe**

**TYPE** FIRE  
**HEIGHT** 2'04" (0.7 m)  
**WEIGHT** 41.9 lbs (19.0 kg)  
**EVOLUTION**  
GROWLITHE > ARCANINE



**Hypno**

**TYPE** PSYCHIC  
**HEIGHT** 5'03" (1.6 m)  
**WEIGHT** 166.7 lbs (75.6 kg)  
**EVOLUTION**  
DROWZEE > HYPNO



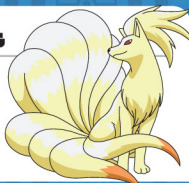
**Nidoking**

**TYPE** POISON - GROUND  
**HEIGHT** 4'07" (1.4 m)  
**WEIGHT** 136.7 lbs (62.0 kg)  
**EVOLUTION**  
NIDORAN♂ > NIDORINO > NIDOKING



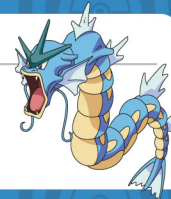
**Ninetales**

**TYPE** FIRE  
**HEIGHT** 3'07" (1.1 m)  
**WEIGHT** 43.9 lbs (19.9 kg)  
**EVOLUTION**  
VULPIX > NINETALES



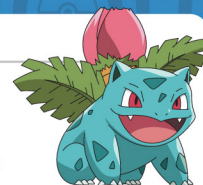
**Gyarados**

**TYPE** WATER - FLYING  
**HEIGHT** 21'04" (6.5 m)  
**WEIGHT** 518.1 lbs (235.0 kg)  
**EVOLUTION**  
MAGIKARP > GYARADOS



**Ivysaur**

**TYPE** GRASS - POISON  
**HEIGHT** 3'03" (1.0 m)  
**WEIGHT** 28.7 lbs (13.0 kg)  
**EVOLUTION**  
BULBAUR > IVYSAUR > VENUSAUR



**Nidoqueen**

**TYPE** POISON - GROUND  
**HEIGHT** 4'03" (1.3 m)  
**WEIGHT** 132.3 lbs (60.0 kg)  
**EVOLUTION**  
NIDORAN♀ > NIDORINA > NIDOQUEEN



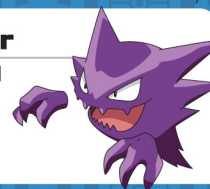
**Oddish**

**TYPE** GRASS - POISON  
**HEIGHT** 1'08" (0.5 m)  
**WEIGHT** 11.9 lbs (5.4 kg)  
**EVOLUTION**  
ODDISH > GLOOM > VILEPLUME



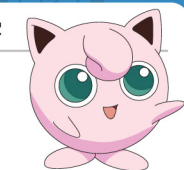
**Haunter**

**TYPE** GHOST - POISON  
**HEIGHT** 5'03" (1.6 m)  
**WEIGHT** 0.2 lbs (0.1 kg)  
**EVOLUTION**  
GASTLY > HAUNTER > GENGAR



**Jigglypuff**

**TYPE** NORMAL - FAIRY  
**HEIGHT** 1'08" (0.5 m)  
**WEIGHT** 12.1 lbs (5.5 kg)  
**EVOLUTION**  
JIGGLYPUFF > WIGGLYTUFF



**Nidoran♀**

**TYPE** POISON  
**HEIGHT** 1'04" (0.4 m)  
**WEIGHT** 15.4 lbs (7.0 kg)  
**EVOLUTION**  
NIDORAN♀ > NIDORINA > NIDOQUEEN



**Omanyte**

**TYPE** ROCK - WATER  
**HEIGHT** 1'04" (0.4 m)  
**WEIGHT** 16.5 lbs (7.5 kg)  
**EVOLUTION**  
OMANYTE > OMASTAR



**Hitmonchan**

**TYPE** FIGHTING  
**HEIGHT** 4'07" (1.4 m)  
**WEIGHT** 110.7 lbs (50.2 kg)  
**EVOLUTION**  
DOES NOT EVOLVE



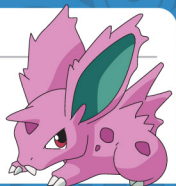
**Jolteon**

**TYPE** ELECTRIC  
**HEIGHT** 2'07" (0.8 m)  
**WEIGHT** 54.0 lbs (24.5 kg)  
**EVOLUTION**  
EVEEVE > Vaporeon OR Jolteon OR Flareon



**Nidoran♂**

**TYPE** POISON  
**HEIGHT** 1'08" (0.5 m)  
**WEIGHT** 19.8 lbs (9.0 kg)  
**EVOLUTION**  
NIDORAN♂ > NIDORINO > NIDOKING



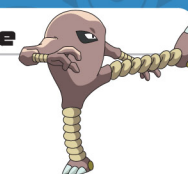
**Omastar**

**TYPE** ROCK - WATER  
**HEIGHT** 3'03" (1.0 m)  
**WEIGHT** 77.2 lbs (35.0 kg)  
**EVOLUTION**  
OMANYTE > OMASTAR



**Hitmonlee**

**TYPE** FIGHTING  
**HEIGHT** 4'11" (1.5 m)  
**WEIGHT** 109.8 lbs (49.8 kg)  
**EVOLUTION**  
DOES NOT EVOLVE



**Jynx**

**TYPE** ICE - PSYCHIC  
**HEIGHT** 4'07" (1.4 m)  
**WEIGHT** 89.5 lbs (40.6 kg)  
**EVOLUTION**  
DOES NOT EVOLVE



## Kabuto

TYPE ROCK - WATER

HEIGHT 1'08" (0.5 m)  
WEIGHT 25.4 lbs (11.5 kg)

EVOLUTION  
KABUTO > KABUTOPS



## Kabutops

TYPE ROCK - WATER

HEIGHT 4'03" (1.3 m)  
WEIGHT 89.3 lbs (40.5 kg)

EVOLUTION  
KABUTO > KABUTOPS



## Kadabra

TYPE PSYCHIC

HEIGHT 4'03" (1.3 m)  
WEIGHT 124.6 lbs (56.5 kg)

EVOLUTION  
ABRA > KADABRA > ALAKAZAM



## Kakuna

TYPE BUG - POISON

HEIGHT 2'00" (0.6 m)  
WEIGHT 22.0 lbs (10.0 kg)

EVOLUTION  
WEEDLE > KAKUNA > BEEDRILL



## Kangaskhan

TYPE NORMAL

HEIGHT 2'03" (0.6 m)  
WEIGHT 176.4 lbs (80.0 kg)

EVOLUTION  
DOES NOT EVOLVE



## Kingler

TYPE WATER

HEIGHT 4'03" (1.3 m)  
WEIGHT 132.3 lbs (60.0 kg)

EVOLUTION  
KRABBY > KINGLER

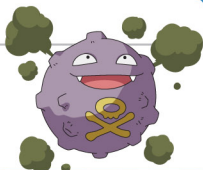


## Koffing

TYPE POISON

HEIGHT 2'00" (0.6 m)  
WEIGHT 2.2 lbs (1.0 kg)

EVOLUTION  
KOFFING > WEEZING



## Krabby

TYPE WATER

HEIGHT 1'04" (0.4 m)  
WEIGHT 14.3 lbs (6.5 kg)

EVOLUTION  
KRABBY > KINGLER



## Lapras

TYPE WATER - ICE

HEIGHT 8'02" (2.5 m)  
WEIGHT 485.0 lbs (220.0 kg)

EVOLUTION  
DOES NOT EVOLVE



## Lickitung

TYPE NORMAL

HEIGHT 3'11" (1.2 m)  
WEIGHT 144.4 lbs (65.5 kg)

EVOLUTION  
DOES NOT EVOLVE



## Machop

TYPE FIGHTING

HEIGHT 5'03" (1.6 m)  
WEIGHT 286.6 lbs (130.0 kg)

EVOLUTION  
MACHOP > MACHOKE > MACHAMP



## Machoke

TYPE FIGHTING

HEIGHT 4'11" (1.5 m)  
WEIGHT 155.4 lbs (70.5 kg)

EVOLUTION  
MACHOP > MACHOKE > MACHAMP



## Machop

TYPE FIGHTING

HEIGHT 2'07" (0.8 m)  
WEIGHT 43.0 lbs (19.5 kg)

EVOLUTION  
MACHOP > MACHOKE > MACHAMP



## Magikarp

TYPE WATER

HEIGHT 2'11" (0.9 m)  
WEIGHT 22.0 lbs (10.0 kg)

EVOLUTION  
MAGIKARP > GYARADOS



## Magmar

TYPE FIRE

HEIGHT 4'03" (1.3 m)  
WEIGHT 98.1 lbs (44.5 kg)

EVOLUTION  
DOES NOT EVOLVE

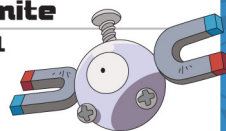


## Magnemite

TYPE ELECTRIC - STEEL

HEIGHT 1'00" (0.3 m)  
WEIGHT 13.2 lbs (6.0 kg)

EVOLUTION  
MAGNEMITE > MAGNETON

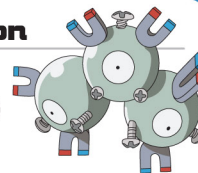


## Magneton

TYPE ELECTRIC - STEEL

HEIGHT 3'03" (1.0 m)  
WEIGHT 132.3 lbs (60.0 kg)

EVOLUTION  
MAGNEMITE > MAGNETON



## Marowak

TYPE GROUND

HEIGHT 3'03" (1.0 m)  
WEIGHT 99.2 lbs (45.0 kg)

EVOLUTION  
CUBONE > MAROWAK



## Meowth

TYPE NORMAL

HEIGHT 2'04" (0.4 m)  
WEIGHT 9.3 lbs (4.2 kg)

EVOLUTION  
MEOWTH > PERSIAN



## Metapod

TYPE BUG

HEIGHT 2'04" (0.7 m)  
WEIGHT 21.8 lbs (9.9 kg)

EVOLUTION  
CATERPIE > METAPOD > BUTTERFREE



## Mew

TYPE PSYCHIC

HEIGHT 1'04" (0.4 m)  
WEIGHT 8.8 lbs (4.0 kg)

EVOLUTION  
DOES NOT EVOLVE



## Mewtwo

TYPE PSYCHIC

HEIGHT 6'07" (2.0 m)  
WEIGHT 269.0 lbs (122.0 kg)

EVOLUTION  
DOES NOT EVOLVE



## Moltres

TYPE FIRE - FLYING

HEIGHT 6'07" (2.0 m)  
WEIGHT 132.3 lbs (60.0 kg)

EVOLUTION  
DOES NOT EVOLVE

